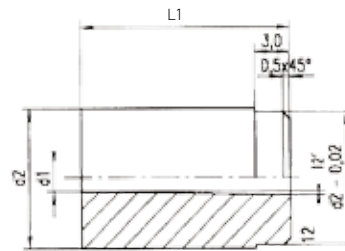


# 3 Rezilna matrica

## Cutting Bush

# DIN 9845 A - HM



### THM podobna standardu DIN 9845 tipu - A.

THM - Tungsten Carbide  
die similar to DIN 9845  
standard type - A.

Dimenzije so prikazane v tabeli.

#### Tipi:

A - rezilna matrica s cilindričnim  
premerom, kaljena, napuščena in  
brušena

#### Material:

HM - karbidna trdina.

The dimensions are shown in the table.

#### Types

A - with cylindrical external diameter,  
grounded.

#### Material:

HM -Tungsten Carbide.

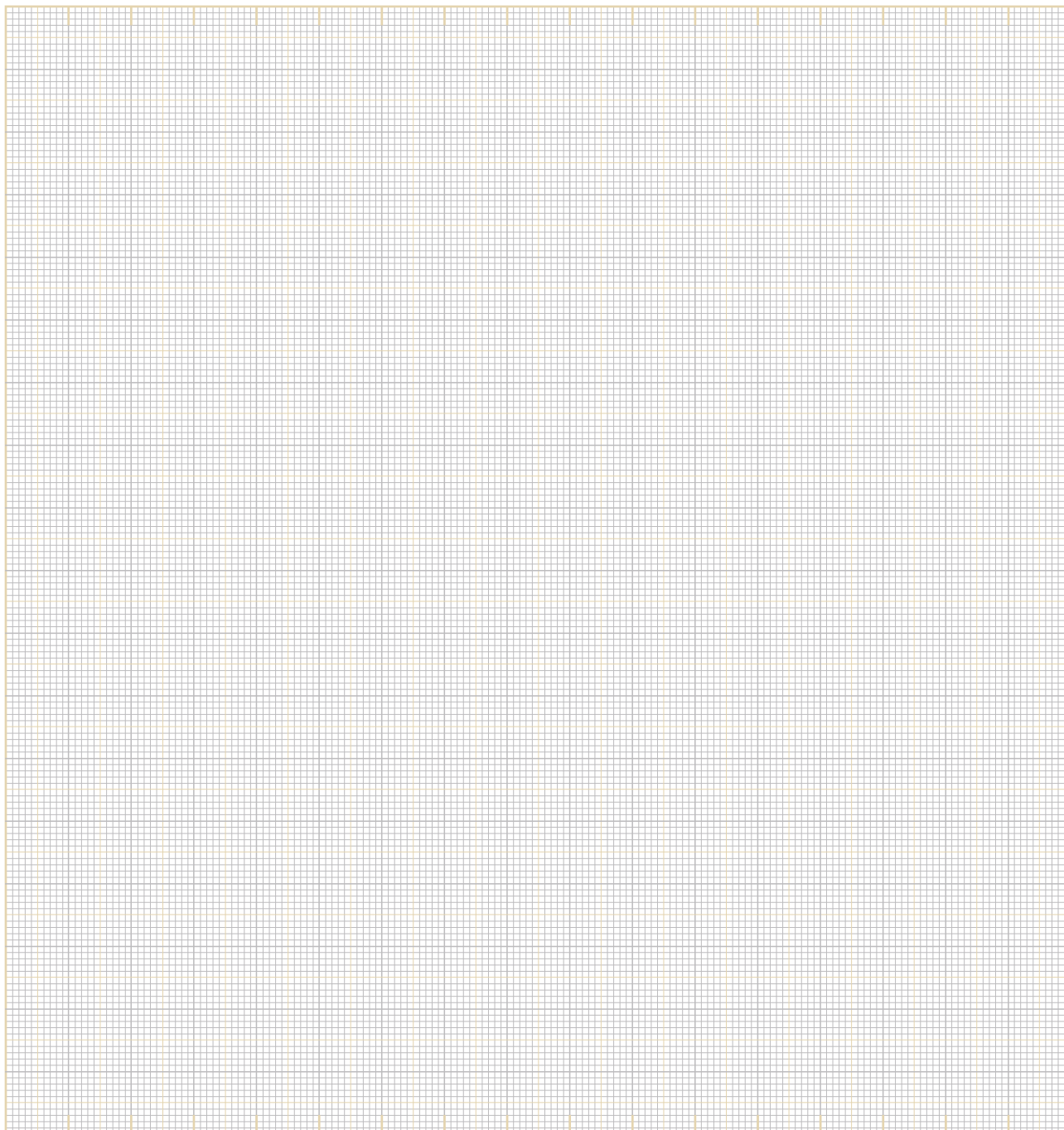
| d1<br>± 0,005<br>od / from | Stopnjevanje<br>Gradation | d2<br>+ 0,007<br>+ 0,003 | Dolžina / Length<br>L1<br>± 0,02 |
|----------------------------|---------------------------|--------------------------|----------------------------------|
| 0,5                        | 0,01                      | 4                        | 20,05                            |
| 0,5                        |                           | 5                        |                                  |
| 0,9                        |                           | 6                        |                                  |
| 1,7                        |                           | 7                        |                                  |
| 1,7                        |                           | 8                        |                                  |
| 1,7                        |                           | 10                       |                                  |
| 1,7                        |                           | 12                       |                                  |
| 3,3                        |                           | 15                       |                                  |
| 3,3                        |                           | 18                       |                                  |

#### Opomba | Note

Upoštevati je potrebno razmik med  
rezilno iglo in matrico.

Consider the clearance between the  
piercing punch and the bush.





---

---

---